



Catalogo
Pavimenti
—
Floor tiles

DECORATORI[®]
BASSANESI
ITALIA  1988

IT La bellezza del processo creativo: dall'idea alla forma.

La decorazione è un universo affascinante che esploriamo con curiosità e passione per proposte inedite e ricercate. Produrre una superficie significa per noi elaborare un'idea, un pensiero nuovo, trovare chiavi di lettura contemporanee per dare vita a prodotti che durino nel tempo, capaci sempre di distinguersi per qualità dei materiali e attenzione al dettaglio.

Lavoriamo al design e alla realizzazione di nuovi materiali in modo diretto e sincero, a partire dalla funzione d'uso cui il prodotto è destinato, per arrivare al cuore del pensiero creativo e dare forma a nuove sensazioni visive e tattili.

La ricerca, lo studio e la sperimentazione si arricchiscono grazie alla collaborazione con alcune delle figure più interessanti nel panorama della decorazione di interni e del design internazionale.

La sensibilità di ogni designer, le esigenze dei progettisti, le tecnologie applicabili e le destinazioni d'uso, aprono di volta in volta nuovi scenari.

La realizzazione di una nuova collezione prende forma, come a partire da un foglio bianco sul quale creare una nuova composizione, per dare vita ad un unico e sempre, per noi, sorprendente risultato.

EN The beauty of the creative process: from idea to form.

Home decor is a fascinating world, that we explore with curiosity and passion in creating our unusual and sought-after styles. For us, creating a surface means developing an idea, something new and original. It means finding a modern interpretation of timeless products, bringing them to life with such high-quality materials and attention to detail that they will always stand out.

We design and create our materials in a straightforward and honest manner, beginning with the functional use of the product in mind, in order to get to the heart of the creative process and give shape to new visual and tactile sensations.

Our research, study and experimentation are all enriched by our collaboration with some of the most fascinating players on the international stage of interior decor and design. The sensibilities of the designers, the needs of the architects, the applicable technologies and the eventual end use of the product can open doors to new paradigms and ideas. The creation of a new collection takes shape like a painting on a blank canvas, bringing unique results to life that, for us, are always a happy surprise.



DB Studio

Italy

Bio:

^{IT} DB Studio (Decoratori Bassanesi Studio) corrisponde al gruppo interno di ricerca e sviluppo di Decoratori Bassanesi: oltre a coordinare tutte le ricerche in fase di laboratorio, progetta esso stesso alcune delle collezioni, nella fattispecie Trax, Seeds e Luci di Venezia. Si tratta di un gruppo "aperto" e sempre pronto a collaborazioni con color designer, decoratori, progettisti. DB Studio porta costantemente avanti una ricerca interna al marchio che arricchisce e completa le collaborazioni con i decoratori e i designers che di anno in anno selezioniamo per progettare le nuove collezioni.

^{EN} DB Studio (Decoratori Bassanesi Studio) is the internal R&D group of Decoratori Bassanesi. In addition to coordinating the workshop stage of all research projects, the group also designs some of the studio's collections (in this volume, Trax, Seeds and Luci di Venezia.) It is an "open" group, always ready to collaborate with colour designers and interior decorators. DB Studio is constantly hard at work on internal brand research to enrich and expand their collaborations with the decorators and designers selected throughout the years to design new collections.

Indice delle collezioni

Collections index

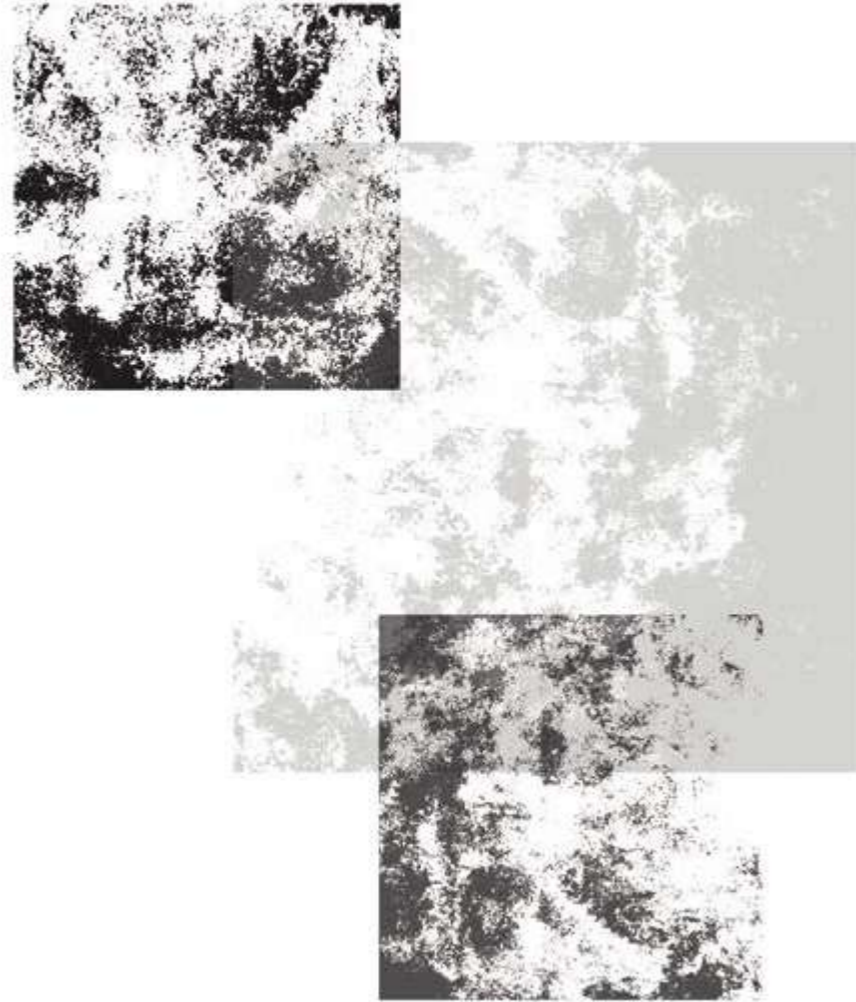
Collezione Collection	Designer Author	Anno Year	Pagina Page
Evolution	DB Studio	2021	06
Tela	DB Studio	2021	22
Trax90	DB Studio	2021	40
Seeds	DB Studio	2016	52
Riflesso	DB Studio	2015	62
Dati tecnici Technical data			72

Evolution

Design:
DB Studio

Anno:
2021
Destra:
Evolution Bronze

Year:
2021
Right:
Evolution Bronze



▣ Pavimento^{EN} Floor
Evolution Silver 120x120 cm



▣ Pavimento^{EN} Floor
Evolution Silver 120x120 cm



▣ Pavimento^{EN} Floor
Evolution Ivory 60x120 cm



II Pavimento^{EN} Floor
Evolution Ivory 60x120 cm



▣ Pavimento Sinistra ^{EN} Left Floor
Evolution Snow 120x120 cm
Tela Blue 60x120 cm

▣ Pavimento Destra ^{EN} Right Floor
Evolution Snow 120x120 cm



▣ **Pavimento Sinistra^{EN} Left Floor**
Tela Bronze 120x120 cm
Evolution Bronze 60x120 cm

▣ **Pavimento Destra^{EN} Right Floor**
Evolution Bronze 60x120 cm

▣ **Parete Destra^{EN} Right Wall**
Tela Bronze 60x120 cm
Luci di Venezia - Foliage Bronze 60x120 cm



▣ Parete ^{EN} Wall
Evolution Bronze Lines 15x120 cm

▣ Pavimento ^{EN} Floor
Evolution Bronze 60x60 cm

Riepilogo gamma Evolution

▣ Spessore ^{EN} Thickness:
6,5 mm

Range summary

BASE COLOURS



Evolution Snow



Evolution Ivory



Evolution Bronze



Evolution Silver



Evolution Black

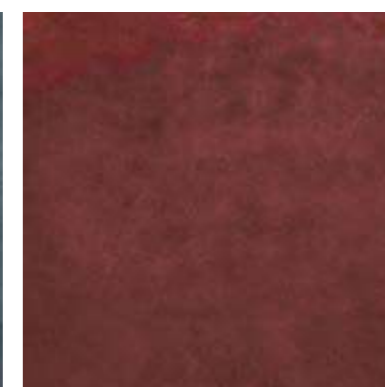
SPECIAL COLOURS



Evolution Green



Evolution Blue



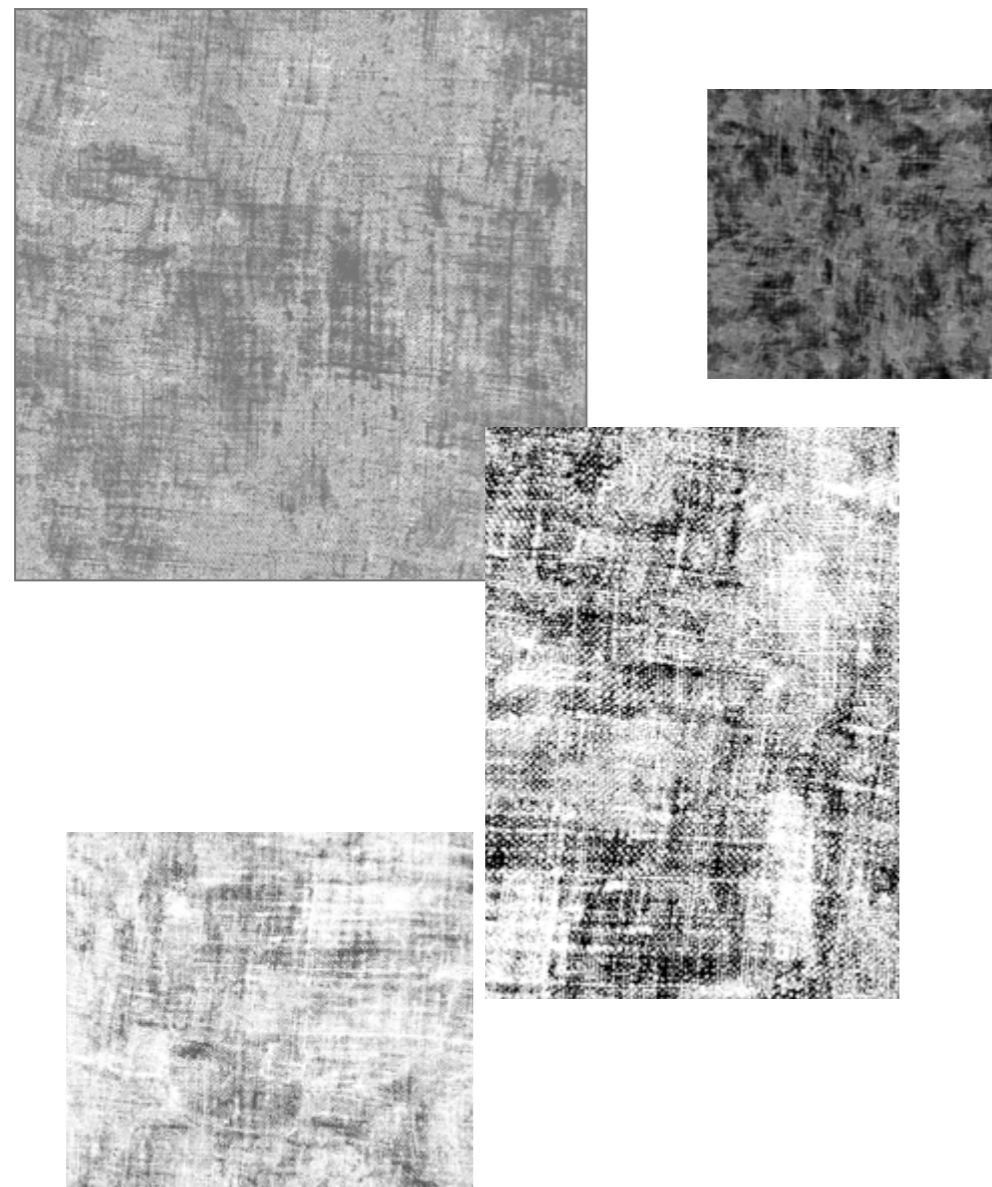
Evolution Red

Tela

Design:
DB Studio

▣ Anno:
2021
Destra:
Tela Silver

EN Year:
2021
Right:
Tela Silver



▣ Pavimento ^{EN} Floor
Tela Black 120x120 cm



▣ Pavimento ^{EN} Floor
Tela Black 120x120 cm



II Pavimento^{EN} Floor
Tela Blue 60x120 cm
Evolution Snow 120x120 cm



▣ **Parete^{EN} Wall**
Luci di Venezia - Foliage Ivory 60x120 cm
Luci di Venezia - Foliage Green 60x120 cm

▣ **Pavimento^{EN} Floor**
Tela Ivory 120x120 cm



▣ Parete ^{EN} Wall
Tela Bronze 60x120 cm

▣ Pavimento ^{EN} Floor
Tela Bronze 60x60 cm



▣ **Pavimento^{EN} Floor**
Tela Silver 120x120 cm
Evolution Silver 60x120 cm



▣ Parete ^{EN} Wall
Luci di Venezia - Ducale Silver 60x120 cm

▣ Pavimento ^{EN} Floor
Tela Silver 120x120 cm





▣ Parete ^{EN} Wall
Luci di Venezia - Ducale Silver 60x120 cm

▣ Pavimento ^{EN} Floor
Tela Silver 120x120 cm

Riepilogo gamma Tela

▣ Spessore ^{EN} Thickness:
6,5 mm

Range summary

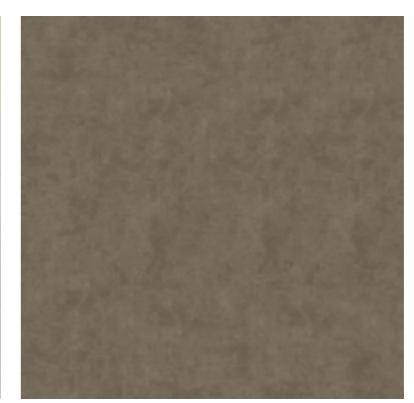
BASE COLOURS



Tela Snow



Tela Ivory



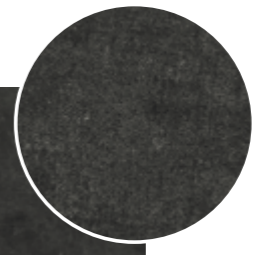
Tela Bronze



Tela Silver



Tela Black



SPECIAL COLOURS



Tela Green



Tela Blue



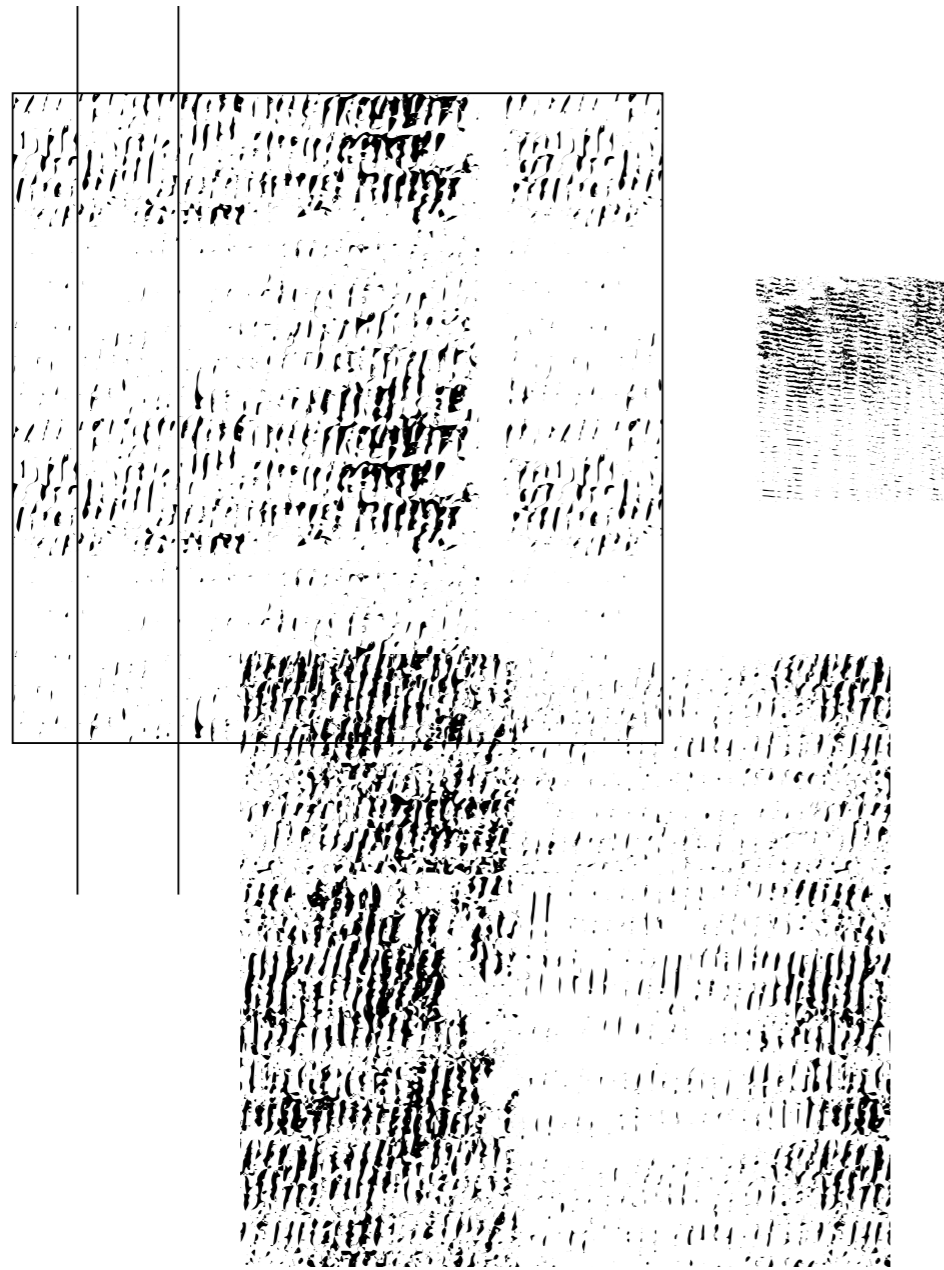
Tela Red

Trax90

Design:
DB Studio

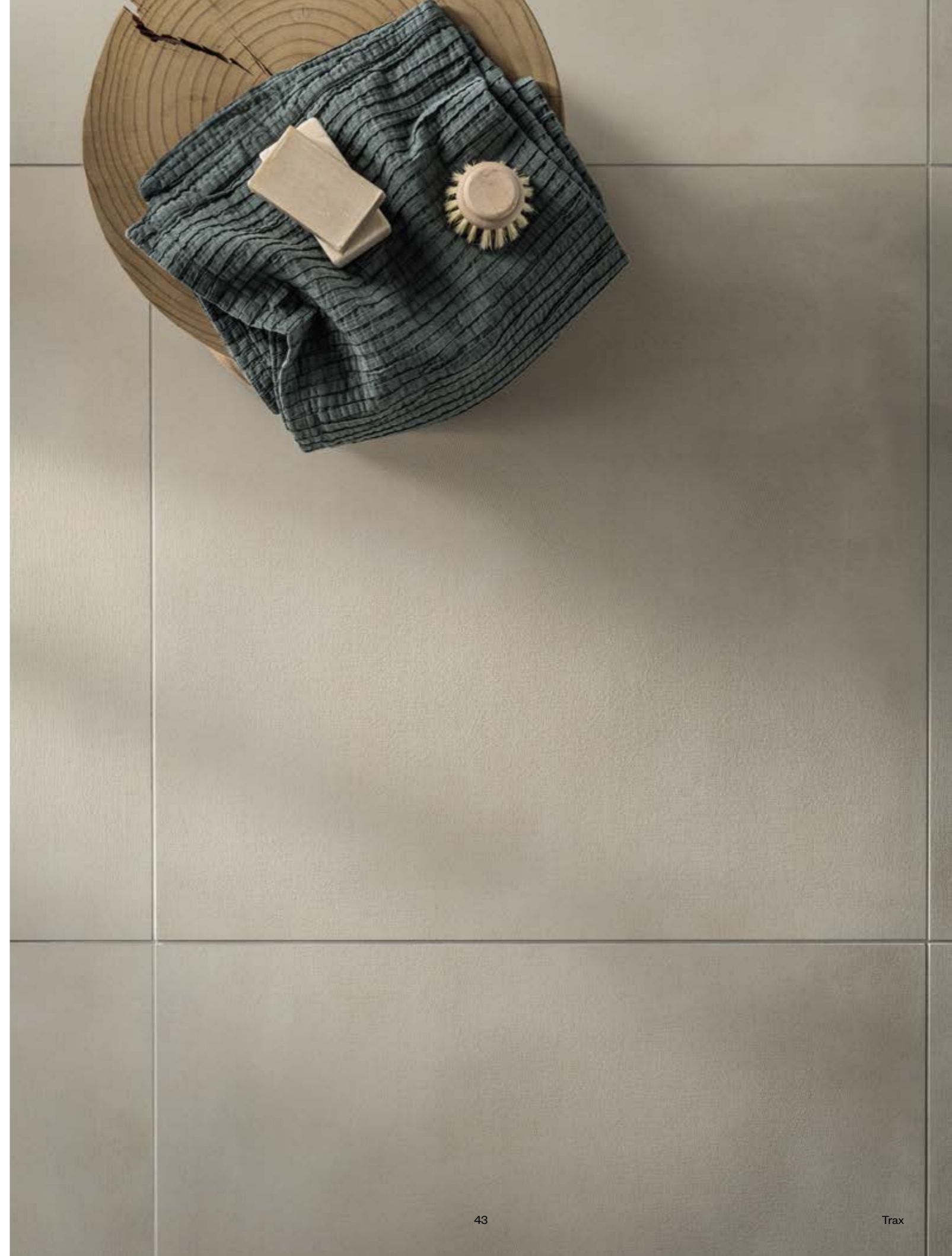
□ Anno:
2021
Destra:
Trax Soft Slate

EN Year:
2021
Right:
Trax Soft Slate



▣ Pavimento Sinistra ^{EN} Left Floor
Trax90 Hard Cotton 45x90 cm

▣ Pavimento Destra ^{EN} Right Floor
Trax90 Soft Cotton 90x90 cm



▣ **Pavimento ^{EN} Floor**
Trax90 Hard Ash 90x90 cm

▣ Trax indaga la presenza di impronte e tracce e le loro stratificazioni nel tempo costruendo superfici personali, ma discrete, decorate ma allo stesso tempo sufficientemente neutre da costituire la base per creare relazioni diverse tra le collezioni DB. Trax Soft, discreto e minimale suggerisce impressioni tessili o organiche di una presenza che nel tempo si è dissolta. Trax Hard, al contrario, si impone per una presenza potente e plastica quasi a pretendere il suo primato di icona materica.

^{EN} TRAX investigates the presence of tracks and signs and their layering through the time building personal but discreet surfaces, decorated but at the same time neutral enough to create the basis for different combinations amongst DB collections. Trax Soft, discreet and minimal, suggests textiles and organic atmospheres of a presence that is now disappeared. Trax hard, on the contrary, impose itself for a powerful and plastic presence almost to declare its leadership of iconic surface.



▣ Parete ^{EN} Wall
Tartan Grey/White



▣ Pavimento ^{EN} Floor
Trax90 Soft Ash 90x90 cm





▣ Pavimento ^{EN} Floor
Trax90 Soft Slate 90x90 cm



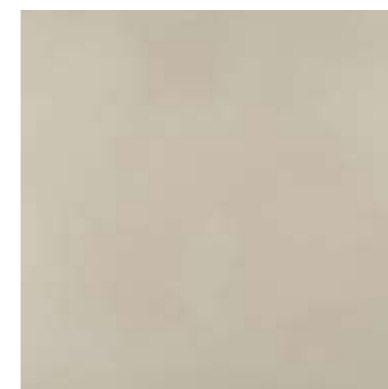
▣ Parete ^{EN} Wall
Imprint Dark

▣ Pavimento ^{EN} Floor
Trax90 Soft Slate 90x90 cm
Trax90 Hard Slate 90x90 cm

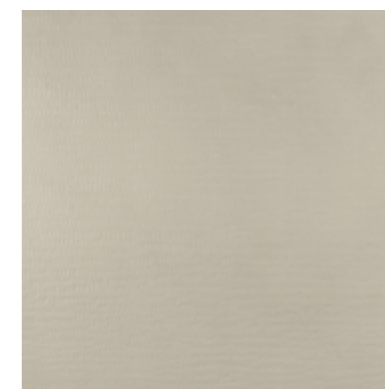
Riepilogo gamma Trax90

▣ Spessore ^{EN} Thickness:
10 mm

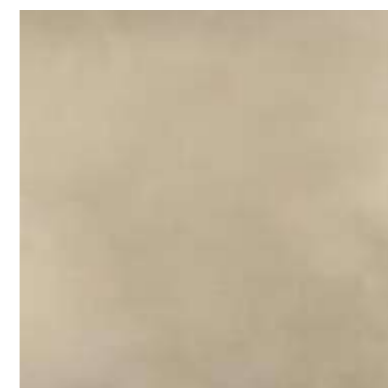
Range summary



Trax90 Soft Cotton



Trax90 Hard Cotton



Trax90 Soft Camel



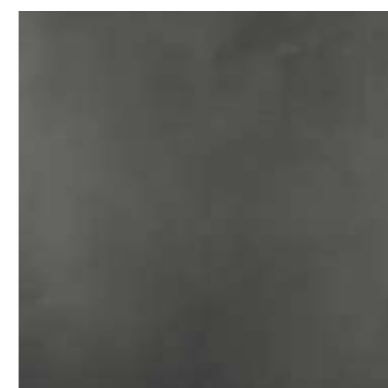
Trax90 Hard Camel



Trax90 Soft Ash



Trax90 Hard Ash



Trax90 Soft Slate



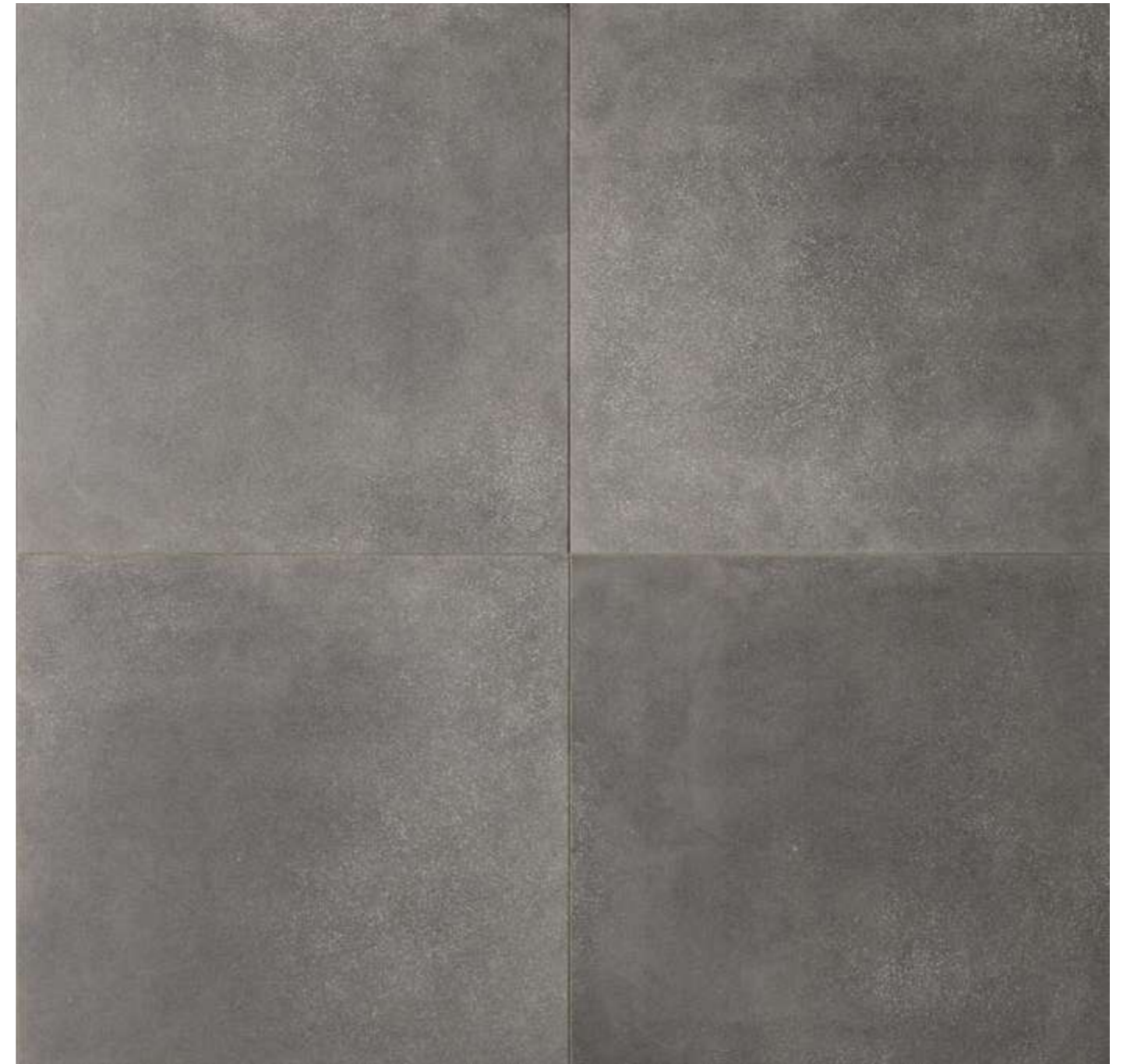
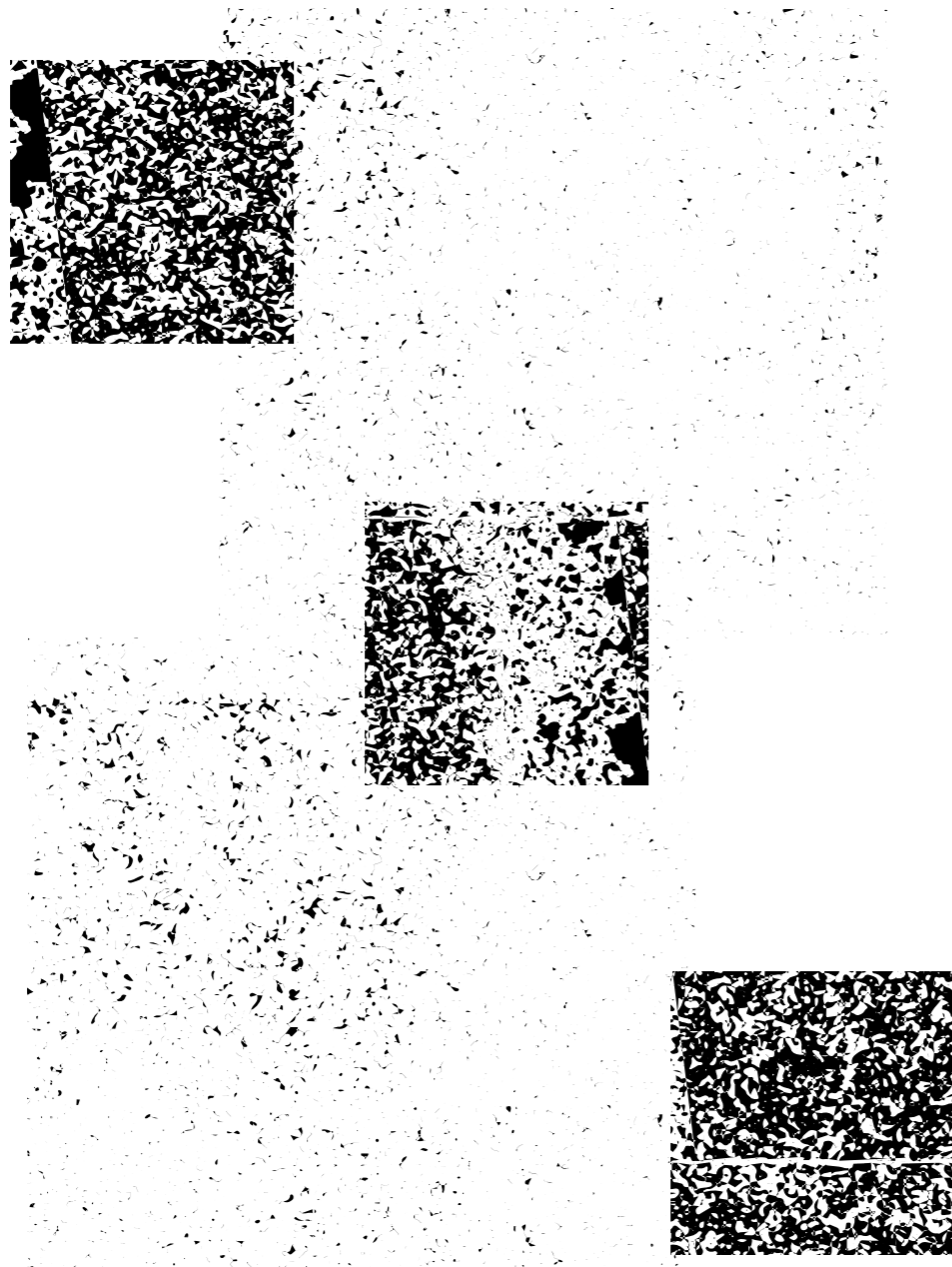
Trax90 Hard Slate

Seeds

Design:
DB Studio

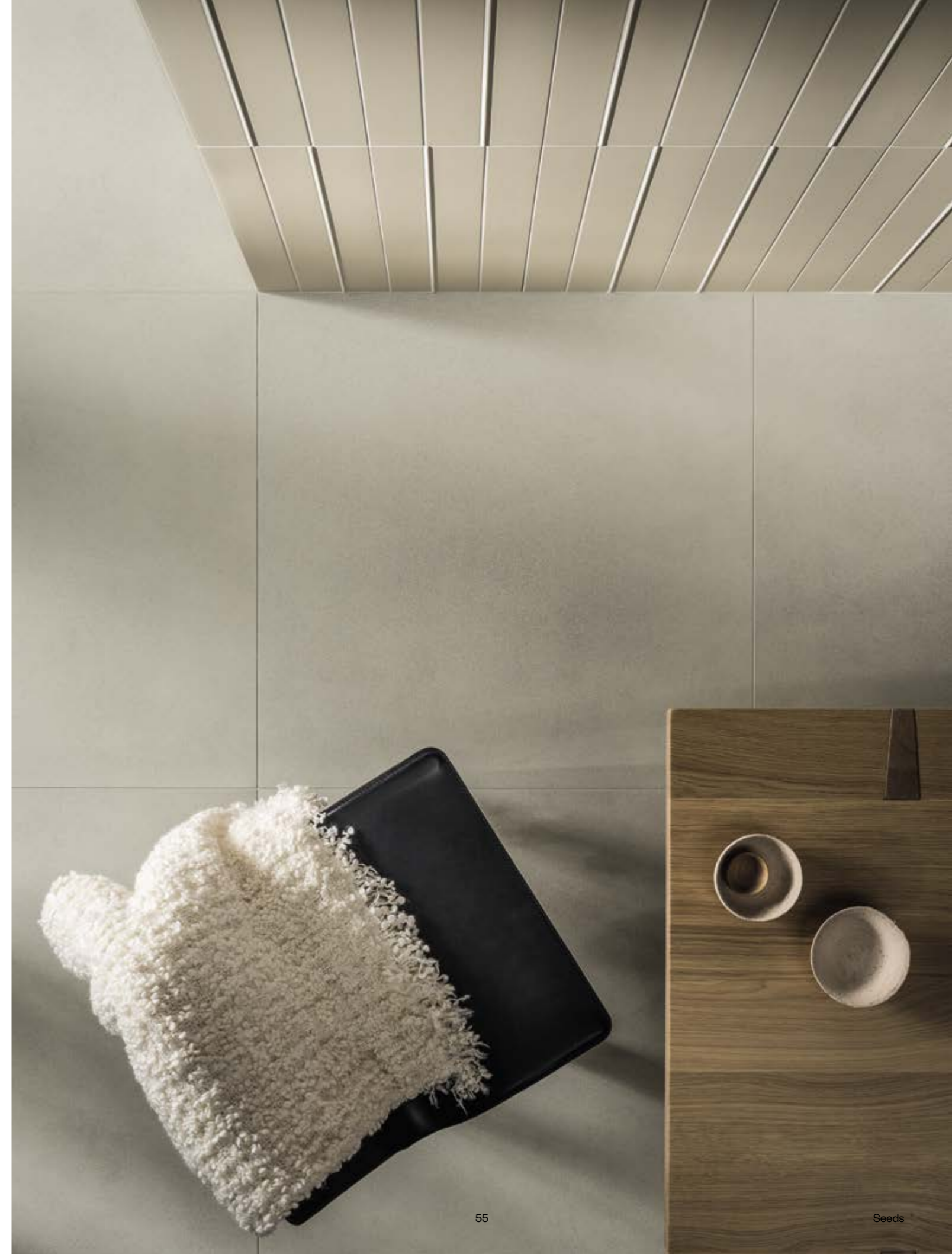
Anno:
2016
Destra:
Seeds Stone Grey

Year:
2016
Right:
Seeds Stone Grey



▣ Parete ^{EN} Wall
Segments Large Bone

▣ Pavimento ^{EN} Floor
Seeds Chalk 90x90 cm



II Pavimento ^{EN} Floor
Seeds Chalk 90x90 cm

II SEEDS indaga il concetto di variabilità attraverso la costruzione di blocchi di materia tagliata che singolarmente appaiono disomogenei, ma che nel montaggio acquisiscono il loro equilibrio attraverso una diversificazione equilibrata delle intrusioni superficiali. In SEEDS la ricerca dei dettagli e degli equilibri fra pieno e vuoto fa di un materiale dall'aspetto primitivo, una superficie elegante e senza tempo.

^{EN} SEEDS explores the variability creating uneven blocks of material that acquires an equilibrium, in the installation, through a balanced diversification of the seeds on the surface. In SEEDS the research on details and on balances makes a raw material an elegant and timeless surface.



▣ Pavimento ^{EN} Floor
Seeds Dust 90x90 cm





▣ Pavimento ^{EN} Floor
Seeds Stone Grey 90x90 cm

Riepilogo gamma Seeds

▣ Spessore ^{EN} Thickness:
9 mm

Range summary



Seeds Chalk



Seeds Dust



Seeds Taupe



Seeds Stone Grey

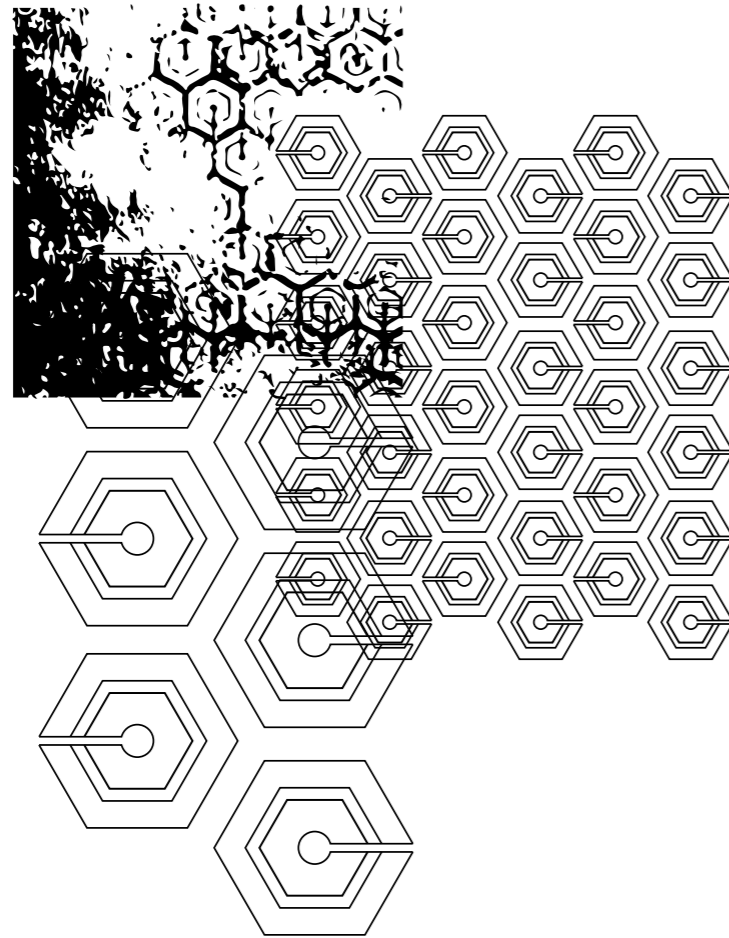
Luci di Venezia

Riflesso

Design:
DB Studio

▣ Anno:
2015
Destra:
Graphite

EN Year:
2015
Right:
Graphite





▣ Parete ^{EN} Wall
Intreccio 7,2 Luci + Riflesso White



▣ Pavimento ^{EN} Floor
Riflesso White 120x120 cm



▣ **Parete^{EN} Wall**
Rialto Grey 60x60 cm
Venezia Grey 60x60 cm

▣ **Pavimento^{EN} Floor**
Riflesso Grey 60x60 cm



▣ Parete ^{EN} Wall
Orizzonti Ice Mirror 30x60 cm

▣ Pavimento ^{EN} Floor
Riflesso Blue 60x120 cm

Riepilogo gamma Riflesso

▣ Spessore ^{EN} Thickness:
6,5 mm

Range summary

BASE COLOURS



Riflesso Ice



Riflesso White



Riflesso Mud



Riflesso Grey



Riflesso Graphite

SPECIAL COLOURS



Riflesso Green



Riflesso Blue



Riflesso Red

Dati tecnici

Technical data

DECORATORI®
BASSANESI
ITALIA 1988

▮ Abbiamo lavorato alla creazione di collezioni uniche per qualità e bellezza, collaborando con i nomi più interessanti del design internazionale, guidati però dalla precisa volontà di proporre un catalogo basato non solo sul singolo prodotto, ma anche sulle relazioni tra prodotti diversi. Formati, colori e tipologie di ogni singola collezione, di seguito riportati, fanno parte di questo studio progettuale e consentono risposte articolate alle necessità dei committenti. Il tema della decorazione è stato sviluppato in modo fortemente coerente ai linguaggi dell'interior contemporaneo.

▮ In working towards the creation of these unique, high-quality and beautiful collections, collaborating with the most interesting designers on the international scene, we were guided by our desire to present a catalogue that would not be based on one single product but rather on the relationships between different products. Formats, colours and types of every collection listed in the following pages are all part of this design project and make it possible for us to provide the ideal solutions to our clients' needs. The theme of the decor has been developed in harmony with the visual language of contemporary interiors.

Collezione Collection	Pagina Page	Informazioni Informations
Evolution	74	▮ Dimensioni ^{EN} Size ▮ Finiture ^{EN} Finishes
Tela	76	▮ Dimensioni ^{EN} Size ▮ Finiture ^{EN} Finishes
Trax90	78	▮ Dimensioni ^{EN} Size ▮ Finiture ^{EN} Finishes
Seeds	80	▮ Dimensioni ^{EN} Size ▮ Finiture ^{EN} Finishes
Riflesso	82	▮ Dimensioni ^{EN} Size ▮ Finiture ^{EN} Finishes
Caratteristiche tecniche Technical specifications	84	
Informazioni tecniche Technical information	87	

▮ Per informazioni sulle altre collezioni presenti in questo catalogo fare riferimento ai cataloghi Collections e Collections Upgrade.

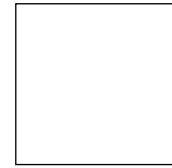
▮ For more information regarding other collections of this catalogue, please refer to the "Collections" and "Collections Upgrade" catalogues.

Evolution

II Gres porcellanato smaltato, rettificato
 EN Porcelain gres Glazed, rectified

II Spessore EN Thickness:
 6,5 mm

II Fuga minima consigliata
 EN Minimum recommended grout line
 2 mm



120x120 cm* | 48"x48"



60x120 cm* | 24"x48"



60x60 cm* | 24"x24"



30x60 cm* | 12"x24"



15x15 cm* | 6"x6"



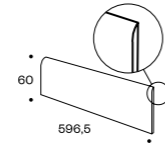
Tessera 2,3x2,3 cm

Mosaico Evolution
 30x30 cm* | 12"x12"

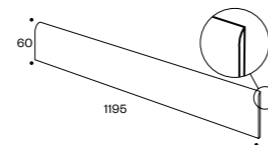


Listello 2,3x120 cm

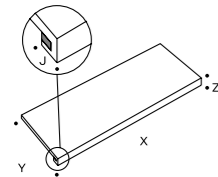
Lines Evolution
 15x120 cm* | 6"x48"



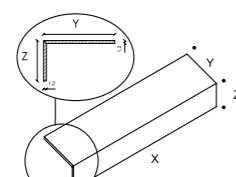
II Battiscopa EN Skirting:
 6x60 cm* | 2,4"x24"



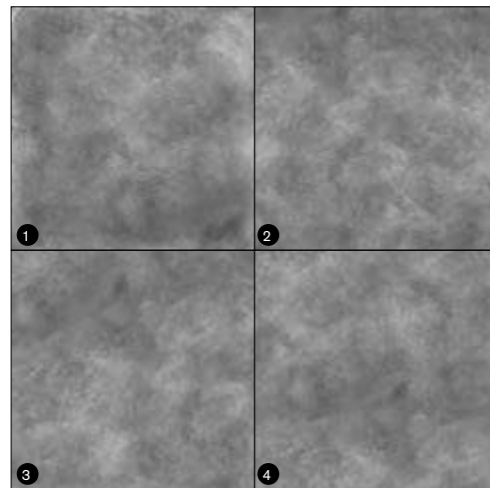
II Battiscopa EN Skirting:
 6x120 cm* | 2,4"x48"



Gradino costa retta personalizzabile
 Service | su richiesta



Elemento a L personalizzabile
 Service | su richiesta



Evolution è realizzato in 4 facce diverse
 Evolution is made in 4 different faces

* misure nominali *nominal sizes

BASE COLOURS



Evolution Snow



Evolution Ivory



Evolution Bronze



Evolution Silver



Evolution Black

SPECIAL COLOURS



Evolution Green



Evolution Blue



Evolution Red

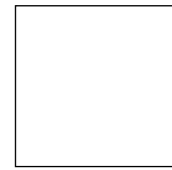
Per maggiori dettagli sulle collezioni Luci di Venezia Foliage e Ducale consultare il sito www.lucidivenezia.it
 For further details on Luci di Venezia Foliage and Ducale collections visit our website www.lucidivenezia.it

Tela

II Gres porcellanato smaltato, rettificato
 EN Porcelain gres Glazed, rectified

II Spessore EN Thickness:
 6,5 mm

II Fuga minima consigliata
 EN Minimum recommended grout line
 2 mm



120x120 cm* | 48"x48"



60x120 cm* | 24"x48"



60x60 cm* | 24"x24"



30x60 cm* | 12"x24"



15x15 cm* | 6"x6"



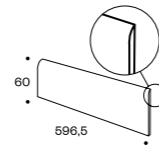
Tessera 2,3x2,3 cm

Mosaico Evolution
 30x30 cm* | 12"x12"

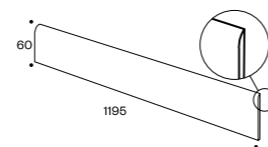


Listello 2,3x120 cm

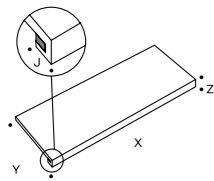
Lines Evolution
 15x120 cm* | 6"x48"



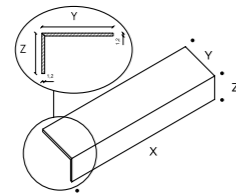
II Battiscopa EN Skirting:
 6x60 cm* | 2,4"x24"



II Battiscopa EN Skirting:
 6x120 cm* | 2,4"x48"



Gradino costa retta personalizzabile
 Service | su richiesta

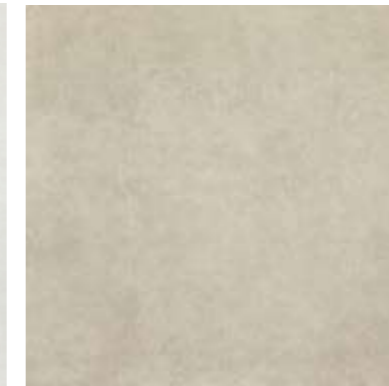


Elemento a L personalizzabile
 Service | su richiesta

BASE COLOURS



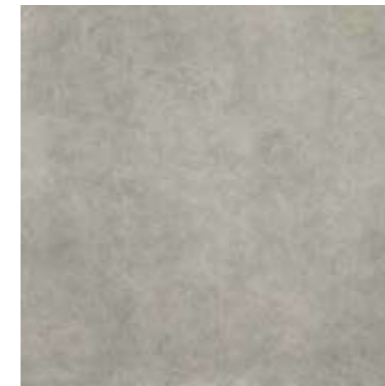
Tela Snow



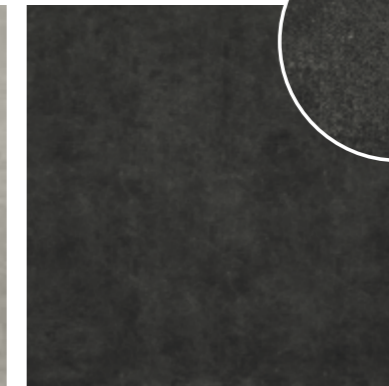
Tela Ivory



Tela Bronze



Tela Silver



Tela Black

SPECIAL COLOURS



Tela Green



Tela Blue

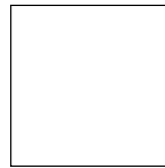


Tela Red

* misure nominali *nominal sizes

Trax90

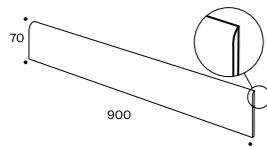
II Gres porcellanato smaltato, rettificato
 EN Porcelain gres Glazed, rectified



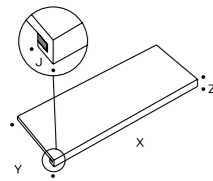
90x90 cm* | 35,4"x35,4"



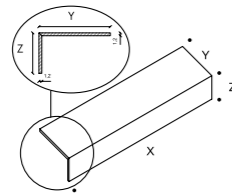
45x90 cm* | 17,7"x35,4"



II Battiscopa EN Skirting: 7x90 cm* | 2,7"x35,4"



Gradino costa retta personalizzabile
 Service | su richiesta



Elemento a L personalizzabile
 Service | su richiesta

II Spessore EN Thickness:
 10 mm

II Fuga minima consigliata
 EN Minimum recommended grout line
 2 mm

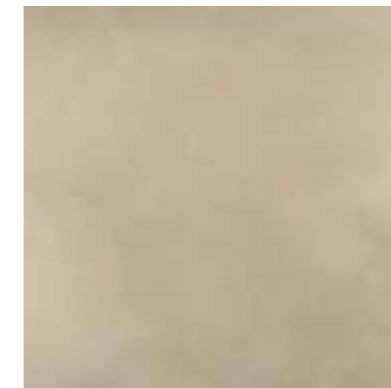
Finitura Finish	Dimensione Size	Codice Code
Soft Cotton	90x90 cm	TR90COSOFT
	45x90 cm	TR45COSOFT
	7x90 cm	TRB90COSOFT
Hard Cotton	90x90 cm	TR90COHARD
	45x90 cm	TR45COHARD
	7x90 cm	TRB90COHARD
Soft Camel	90x90 cm	TR90CSOFT
	45x90 cm	TR45CSOFT
	7x90 cm	TRB90CSOFT
Hard Camel	90x90 cm	TR90CHARD
	45x90 cm	TR45CHARD
	7x90 cm	TRB90CHARD
Soft Ash	90x90 cm	TR90ASOFT
	45x90 cm	TR45ASOFT
	7x90 cm	TRB90ASOFT
Hard Ash	90x90 cm	TR90AHARD
	45x90 cm	TR45AHARD
	7x90 cm	TRB90AHARD
Soft Slate	90x90 cm	TR90SSOFT
	45x90 cm	TR45SSOFT
	7x90 cm	TRB90SSOFT
Hard Slate	90x90 cm	TR90SHARD
	45x90 cm	TR45SHARD
	7x90 cm	TRB90SHARD



Trax90 Soft Cotton



Trax90 Hard Cotton



Trax90 Soft Camel



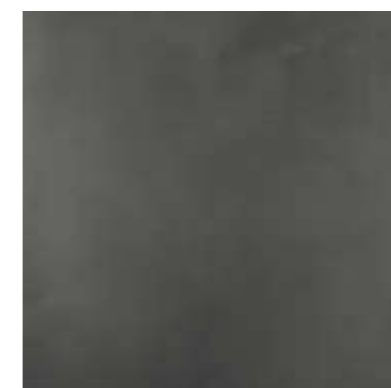
Trax90 Hard Camel



Trax90 Soft Ash



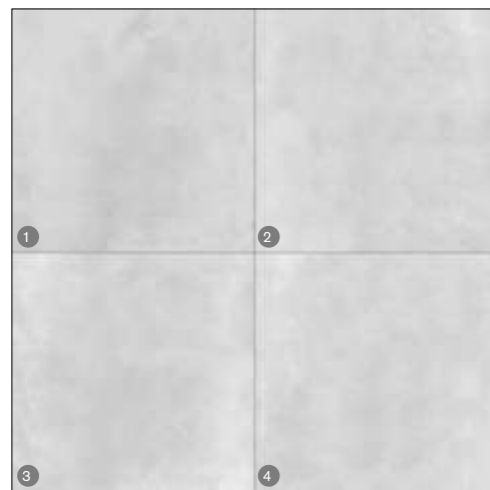
Trax90 Hard Ash



Trax90 Soft Slate



Trax90 Hard Slate



La finitura soft è realizzata in 4 facce diverse
 The soft finish is made in 4 different faces



La finitura hard è realizzata in 3 facce diverse
 The hard finish is made in 3 different faces

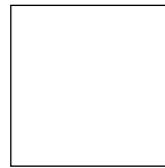
* misure nominali *nominal sizes

Seeds

II Gres porcellanato smaltato, rettificato
 EN Porcelain gres Glazed, rectified

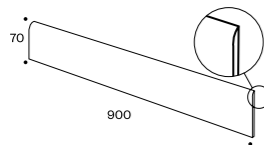
II Spessore EN Thickness:
 9 mm

II Fuga minima consigliata
 EN Minimum recommended grout line
 2 mm

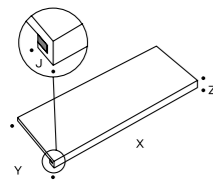


90x90 cm* | 35,4"x35,4"

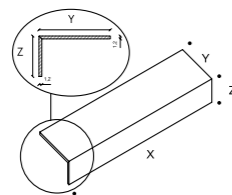
45x90 cm* | 17,7"x35,4"



II Battiscopa EN Skirting: 7x90 cm* | 2,7"x35,4"



Gradino costa retta personalizzabile
 Service | su richiesta



Elemento a L personalizzabile
 Service | su richiesta

Finitura Finish	Dimensione Size	Codice Code
Chalk	90x90 cm	SE909CH
	45x90 cm	SE459CH
	7x90 cm	SEBCH
Dust	90x90 cm	SE909DU
	45x90 cm	SE459DU
	7x90 cm	SEBDU
Taupe	90x90 cm	SE909TA
	45x90 cm	SE459TA
	7x90 cm	SEBTA
Stone Grey	90x90 cm	SE909SG
	45x90 cm	SE459SG
	7x90 cm	SEBSSG



Seeds Chalk



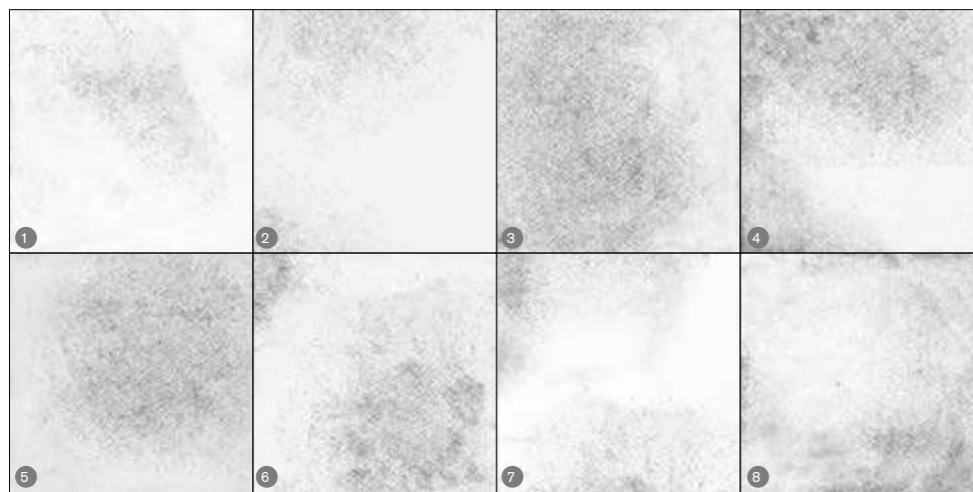
Seeds Dust



Seeds Taupe



Seeds Stone Grey



Una materia granulosa ma compatta in cui piccole intrusioni non vengono distribuite in maniera omogenea, ma sparse come semi sul terreno in modo casuale. Otto diverse lastre si mescolano casualmente per dare vita a un pavimento dal movimento discreto e naturale.

A granular but compact material in which small intrusions are not distributed homogeneously, but scattered like seeds on the ground in a random manner. Eight different slabs are mixed randomly to create flooring with a subtle and natural movement.

* misure nominali *nominal sizes

Luci di Venezia

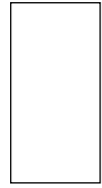
Riflesso

II Gres porcellanato multistrato tutta massa, non smaltato UGL, rettificato

EN Porcelain gres homogeneous multilayer, without enamels UGL, rectified

II Spessore EN Thickness: 6,5 mm

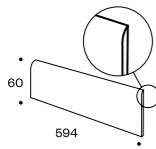
II Fuga minima consigliata
EN Minimum recommended grout line 2 mm



60x120 cm* | 24"x48"



60x60 cm* | 24"x24"



II Battiscopa EN Skirting: 6x60 cm* | 2,4"x24"

BASE COLOURS



Riflesso Ice



Riflesso White



Riflesso Mud



Riflesso Grey



Riflesso Graphite

SPECIAL COLOURS



Riflesso Green



Riflesso Blue



Riflesso Red

* misure nominali *nominal sizes

Caratteristiche tecniche Evolution-Tela-Riflesso

Technical specifications / caractéristiques techniques / technische eigenschaften / технические характеристики

Gres porcellanato smaltato, rettificato - Porcelain gres glazed, rectified - Grès porcelainé émaillé, rectifié - Glasiertes Feinsteinzeug, entgratet - керамогранит Эмалированная, ректифицированные

ISO 13006 - UNI EN 14411 Annex G Bla GL

Spessore - Thickness 6,5 mm	CARATTERISTICHE TECNICHE TECHNICAL SPECIFICATIONS	METODI DI PROVA NORMA ISO STANDARD	VALORI PRESCRITTI DALLE NORME INTERNATIONAL STANDARDS UNI EN 14411 - ISO 13006		PRESTAZIONI PERFORMANCES
	LATI SIDES СТОРОНЫ	ISO 10545-2	± 0,6%	±2.0 mm	CONFORME COMPLIANT УСТУПЧИВЫЙ
	SPESSORE THICKNESS ТОЛЩИНА		± 5%	±0.5 mm	CONFORME COMPLIANT УСТУПЧИВЫЙ
	RETTILINEITÀ DEGLI SPIGOLI STRAIGHTNESS OF EDGES ПРЯМОЛИНЕЙНОСТЬ КРОМОК		± 0,5%	± 1.5 mm	CONFORME COMPLIANT УСТУПЧИВЫЙ
	ORTOGONALITÀ RECTANGULARITY ОРТОГОНАЛЬНОСТЬ		± 0,5%	±2.0 mm	CONFORME COMPLIANT УСТУПЧИВЫЙ
	PLANARITÀ SURFACE FLATNESS ПЛОСКОСТНОСТЬ		± 0,5%	±2.0 mm	CONFORME COMPLIANT УСТУПЧИВЫЙ
	ASSORBIMENTO D'ACQUA WATER ABSORPTION ПОГЛОЩЕНИЕ ВОДЫ	ISO 10545-3	≤ 0,5%		≤ 0,1%
	RESISTENZA ALLA FLESSIONE BENDING STRENGTH ПРОЧНОСТЬ НА ИЗГИБ	ISO 10545-4	≥ 35N/mm ²		≥ 35N/mm ²
	MODULO DI ROTTURA MODULUS OF RUPTURE МОДУЛЬ РАЗРУШЕНИЯ	ISO 10545-4	> 700N (sp. ≤ 7,5mm)		> 700 N
	RESISTENZA ALL'ABRASIONE PROFONDA RESISTANCE TO SURFACE ABRASION СТОЙКОСТЬ К ПОВЕРХНОСТНОМУ ИСТИРАНИЮ	ISO 10545-6	≤ 175mm ³		135mm ³
	RESISTENZA AGLI SBALZI TERMICI RESISTANCE TO THERMAL SHOCKS	ISO 10545-9	METODO DISPONIBILE AVAILABLE METHOD		RESISTE RESISTANT
	RESISTENZA AL GELO FROST RESISTANCE МОРОЗОСТОЙКОСТЬ	ISO 10545-12	METODO DISPONIBILE AVAILABLE METHOD ДОСТУПНЫЙ МЕТОД		RESISTE RESISTANT СТОЙКАЯ
	RESISTENZA AI PRODOTTI CHIMICI USO DOME- STICO E ADDITIVI PER PISCINA- RESISTANCE TO HOUSEHOLD AND SWIMMING POOL CHEMICAL PRODUCTS - СТОЙКОСТЬ К ДЕЙСТВИЮ БЫТОВЫХ ХИМИЧЕСКИХ СРЕДСТВ, ДОБАВКАМ В БАССЕЙНЫ	ISO 10545-13	min. B		CONFORME COMPLIANT УСТУПЧИВЫЙ
	RESISTENZA ALLE MACCHIE STAIN RESISTANCE СТОЙКОСТЬ К ОБРАЗОВАНИЮ	ISO 10545-14	minimum classe 3		CONFORME COMPLIANT УСТУПЧИВЫЙ
	RESISTENZA ALLO SCIVOLAMENTO SKID RESISTANCE СОПРОТИВЛЕНИЕ СКОЛЬЖЕНИЮ	DIN 51130			R10
		DIN 51097			A+B
		DCOF ANSI A137.1			> 0,42 WET
		BRITISH PENDULUM BS 7976-2			> 36 WET

I valori riflettono una media tra diversi test eseguiti secondo le normative di riferimento condotti nei nostri laboratori e/o presso centri di analisi esterni certificati. I valori di singole produzioni possono variare. / Values are based on an average of the results of various tests, which, according to required standards, have been conducted in our certified laboratories or external dedicated centers. Values of each individual production may vary.

Alcune impurità e puntature visibili nei colori chiari sono da considerarsi una caratteristica tecnica del prodotto. Some light impurities and dots must be considered as a standard feature of the product.

Caratteristiche tecniche Trax90

Technical specifications / caractéristiques techniques / technische eigenschaften / технические характеристики

Gres porcellanato smaltato, rettificato - Porcelain gres glazed, rectified - Grès porcelainé émaillé, rectifié - Glasiertes Feinsteinzeug, entgratet - керамогранит Эмалированная, ректифицированные

ISO 13006 - UNI EN 14411 Annex G Bla GL

Spessore - Thickness 10 mm	CARATTERISTICHE TECNICHE TECHNICAL SPECIFICATIONS	METODI DI PROVA NORMA ISO STANDARD	VALORI PRESCRITTI DALLE NORME INTERNATIONAL STANDARDS UNI EN 14411 - ISO 13006		PRESTAZIONI PERFORMANCES	
	LATI SIDES СТОРОНЫ	ISO 10545-2	± 0,6%	±2.0 mm	CONFORME COMPLIANT УСТУПЧИВЫЙ	
	SPESSORE THICKNESS ТОЛЩИНА		± 5%	±0.5 mm	CONFORME COMPLIANT УСТУПЧИВЫЙ	
	RETTILINEITÀ DEGLI SPIGOLI STRAIGHTNESS OF EDGES ПРЯМОЛИНЕЙНОСТЬ КРОМОК		± 0,5%	± 1.5 mm	CONFORME COMPLIANT УСТУПЧИВЫЙ	
	ORTOGONALITÀ RECTANGULARITY ОРТОГОНАЛЬНОСТЬ		± 0,5%	±2.0 mm	CONFORME COMPLIANT УСТУПЧИВЫЙ	
	PLANARITÀ SURFACE FLATNESS ПЛОСКОСТНОСТЬ		± 0,5%	±2.0 mm	CONFORME COMPLIANT УСТУПЧИВЫЙ	
	ASSORBIMENTO D'ACQUA WATER ABSORPTION ПОГЛОЩЕНИЕ ВОДЫ	ISO 10545-3	≤ 0,5%		CONFORME COMPLIANT УСТУПЧИВЫЙ	
	RESISTENZA ALLA FLESSIONE BENDING STRENGTH ПРОЧНОСТЬ НА ИЗГИБ	ISO 10545-4	≥ 35N/mm ²		≥ 35N/mm ²	
	MODULO DI ROTTURA MODULUS OF RUPTURE МОДУЛЬ РАЗРУШЕНИЯ	ISO 10545-4	> 1300N (sp. ≥ 7,5mm)		≥ 1300N	
	RESISTENZA ALL'ABRASIONE SUPERFICIALE PER LE PIASTRELLE SMALTATE RESISTANCE TO SURFACE ABRASION FOR THE ENAMELED TILES СТОЙКОСТЬ К ПОВЕРХНОСТНОМУ ИСТИРАНИЮ ЭМАЛИРОВАННОЙ ПЛИТКИ	ISO 10545-7			DISPONIBILE SU RICHIESTA AVAILABLE ON REQUEST	
	RESISTENZA AGLI SBALZI TERMICI RESISTANCE TO THERMAL SHOCKS	ISO 10545-9	METODO DISPONIBILE AVAILABLE METHOD		RESISTE RESISTANT	
	RESISTENZA AL GELO FROST RESISTANCE МОРОЗОСТОЙКОСТЬ	ISO 10545-12	METODO DISPONIBILE AVAILABLE METHOD ДОСТУПНЫЙ МЕТОД		RESISTE RESISTANT СТОЙКАЯ	
	RESISTENZA AI PRODOTTI CHIMICI USO DOME- STICO E ADDITIVI PER PISCINA- RESISTANCE TO HOUSEHOLD AND SWIMMING POOL CHEMICAL PRODUCTS - СТОЙКОСТЬ К ДЕЙСТВИЮ БЫТОВЫХ ХИМИЧЕСКИХ СРЕДСТВ, ДОБАВКАМ В БАССЕЙНЫ	ISO 10545-13	min. B		CONFORME COMPLIANT УСТУПЧИВЫЙ	
	RESISTENZA ALLE MACCHIE STAIN RESISTANCE СТОЙКОСТЬ К ОБРАЗОВАНИЮ	ISO 10545-14	minimum classe 3		CONFORME COMPLIANT УСТУПЧИВЫЙ	
	RESISTENZA ALLO SCIVOLAMENTO SKID RESISTANCE	AUSTRALIAN PENDULUM			HARD 37	SOFT
		DIN 51130			R11	R10
		DIN 51097			A+B+C	A+B

I valori riflettono una media tra diversi test eseguiti secondo le normative di riferimento condotti nei nostri laboratori e/o presso centri di analisi esterni certificati. I valori di singole produzioni possono variare. / Values are based on an average of the results of various tests, which, according to required standards, have been conducted in our certified laboratories or external dedicated centers. Values of each individual production may vary.

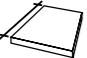
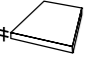

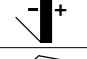










Alcune impurità e puntature visibili nei colori chiari sono da considerarsi una caratteristica tecnica del prodotto. Some light impurities and dots must be considered as a standard feature of the product.

Caratteristiche tecniche Seeds

Technical specifications / caractéristiques techniques / technische eigenschaften / технические характеристики

Gres porcellanato smaltato, rettificato - Porcelain gres glazed, rectified
Grès porcelainé émaillé, rectifié - Glasiertes Feinsteinzeug, entgratet
керамогранит Эмалированная, ректифицированы

ISO 13006 - UNI EN 14411 Annex G Bla GL

Spessore - Thickness 9 mm	CARATTERISTICHE TECNICHE TECHNICAL SPECIFICATIONS	METODI DI PROVA NORMA ISO STANDARD	VALORI PRESCRITTI DALLE NORME INTERNATIONAL STANDARDS UNI EN 14411 - ISO 13006		PRESTAZIONI PERFORMANCES
	LATI SIDES СТОРОНЫ	ISO 10545-2	± 0,6%	±2.0 mm	CONFORME COMPLIANT УСТУПЧИВЫЙ
	SPESSORE THICKNESS ТОЛЩИНА		± 5%	±0.5 mm	CONFORME COMPLIANT УСТУПЧИВЫЙ
	RETTILINEITÀ DEGLI SPIGOLI STRAIGHTNESS OF EDGES ПРЯМОЛИНЕЙНОСТЬ КРОМОК		± 0,5%	±1.5 mm	CONFORME COMPLIANT УСТУПЧИВЫЙ
	ORTOGONALITÀ RECTANGULARITY ОРТОГОНАЛЬНОСТЬ		± 0,5%	±2.0 mm	CONFORME COMPLIANT УСТУПЧИВЫЙ
	PLANARITÀ SURFACE FLATNESS ПЛОСКОСТНОСТЬ		± 0,5%	±2.0 mm	CONFORME COMPLIANT УСТУПЧИВЫЙ
	ASSORBIMENTO D'ACQUA WATER ABSORPTION ПОГЛОЩЕНИЕ ВОДЫ	ISO 10545-3	≤ 0,5%		CONFORME COMPLIANT УСТУПЧИВЫЙ
	RESISTENZA ALLA FLESSIONE BENDING STRENGTH ПРОЧНОСТЬ НА ИЗГИБ	ISO 10545-4	≥ 35N/mm ²		≥ 35N/mm ²
	MODULO DI ROTTURA MODULUS OF RUPTURE МОДУЛЬ РАЗРУШЕНИЯ	ISO 10545-4	> 1300N (sp. ≥ 7,5mm)		≥ 1300N
	RESISTENZA ALL'ABRASIONE SUPERFICIALE PER LE PIASTRELLE SMALTATE RESISTANCE TO SURFACE ABRASION FOR THE ENAMELED TILES СТОЙКОСТЬ К ПОВЕРХНОСТНОМУ ИСТИРАНИЮ ЭМАЛИРОВАННОЙ ПЛИТКИ	ISO 10545-7			DISPONIBILE SU RICHIESTA AVAILABLE ON REQUEST
	RESISTENZA AGLI SBALZI TERMICI RESISTANCE TO THERMAL SHOCKS	ISO 10545-9	METODO DISPONIBILE AVAILABLE METHOD		RESISTE RESISTANT
	RESISTENZA AL GELO FROST RESISTANCE МОРОЗОСТОЙКОСТЬ	ISO 10545-12	METODO DISPONIBILE AVAILABLE METHOD ДОСТУПНЫЙ МЕТОД		RESISTE RESISTANT СТОЙКАЯ
	RESISTENZA AI PRODOTTI CHIMICI USO DOMESTICO E ADDITIVI PER PISCINA- RESISTANCE TO HOUSEHOLD AND SWIMMING POOL CHEMICAL PRODUCTS - СТОЙКОСТЬ К ДЕЙСТВИЮ БЫТОВЫХ ХИМИЧЕСКИХ СРЕДСТВ, ДОБАВКАМ В БАССЕЙНЫ	ISO 10545-13	min. B		CONFORME COMPLIANT УСТУПЧИВЫЙ
	RESISTENZA ALLE MACCHIE STAIN RESISTANCE СТОЙКОСТЬ К ОБРАЗОВАНИЮ	ISO 10545-14	minimum classe 3		CONFORME COMPLIANT УСТУПЧИВЫЙ
	RESISTENZA ALLO SCIVOLAMENTO SKID RESISTANCE	DIN 51130			R10
		DIN 51097			A+B

I valori riflettono una media tra diversi test eseguiti secondo le normative di riferimento condotti nei nostri laboratori e/o presso centri di analisi esterni certificati. I valori di singole produzioni possono variare. / Values are based on an average of the results of various tests, which, according to required standards, have been conducted in our certified laboratories or external dedicated centers. Values of each individual production may vary.

Alcune impurità e puntature visibili nei colori chiari sono da considerarsi una caratteristica tecnica del prodotto. Some light impurities and dots must be considered as a standard feature of the product.

Informazioni tecniche

Technical information

Le nostre lastre sono sempre rettificate e hanno dimensioni finali in mm come da tabella.
Fuga minima consigliata 2 mm.

Our slabs are always rectified and the table below indicates their final size in mm.
Minimum recommended grout line 2 mm.

TRAX90 - SEEDS

Formato nominale (cm) Nominal size (cm)	Formato rettificato (mm) Rectified size (mm)
90x90	900x900
45x90	449x900

EVOLUTION - TELA - RIFLESSO

Formato nominale (cm) Nominal size (cm)	Formato rettificato (mm) Rectified size (mm)
120x120	1195x1195
60x120	596,5x1195
60x60	596,5x596,5
30x60	297,3x596,5
15x15	147,7x147,7
Mosaico 30x30	297,3x297,3

^{IT} Per schede tecniche prodotti visita il sito www.decoratoribassanesi.it

^{EN} For technical data sheets visit the website www.decoratoribassanesi.it

^{IT} I colori possono risultare falsati dai procedimenti litografici

^{EN} The colours could be altered the lithographic printing process

Credits

Product design

DB Studio

3D visualizations

Operavisual

Colour separation and print

Grafiche Antiga

Settembre 2021

Image credits

P. 44 | Black House / progetto Brandless Studio

**Decoratori Bassanesi srl**

Sede operativa - Via Vallina Orticella, 48 | 31030 Borso del Grappa (TV)
Sede legale - Largo Perlasca, 19 | 36061 Bassano del Grappa (VI)
+39 0423 910076 | info@decoratoribassanesi.it
www.decoratoribassanesi.it

The right side of the page features a vertical strip of decorative patterns. From top to bottom, there is a small rectangular pattern, a larger pattern with a repeating geometric motif, a pattern with a repeating floral or leaf-like motif, and a large, dense, abstract pattern at the bottom.

Decoratori Bassanesi srl

Sede legale: Largo Perlasca, 19 | 36061 Bassano del Grappa (VI)
Uffici e depositi: via Vallina Orticella, 48 | 31030 Borso del Grappa (TV)
+39 0423 910076 | info@decoratoribassanesi.it
www.decoratoribassanesi.it